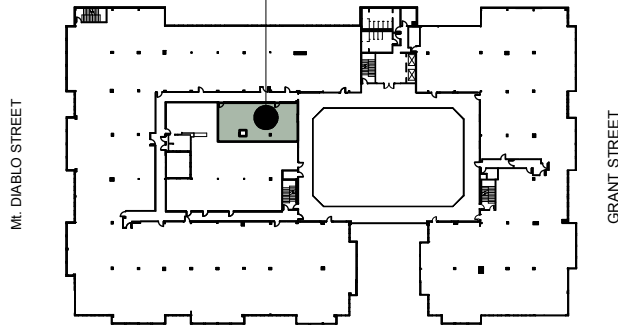
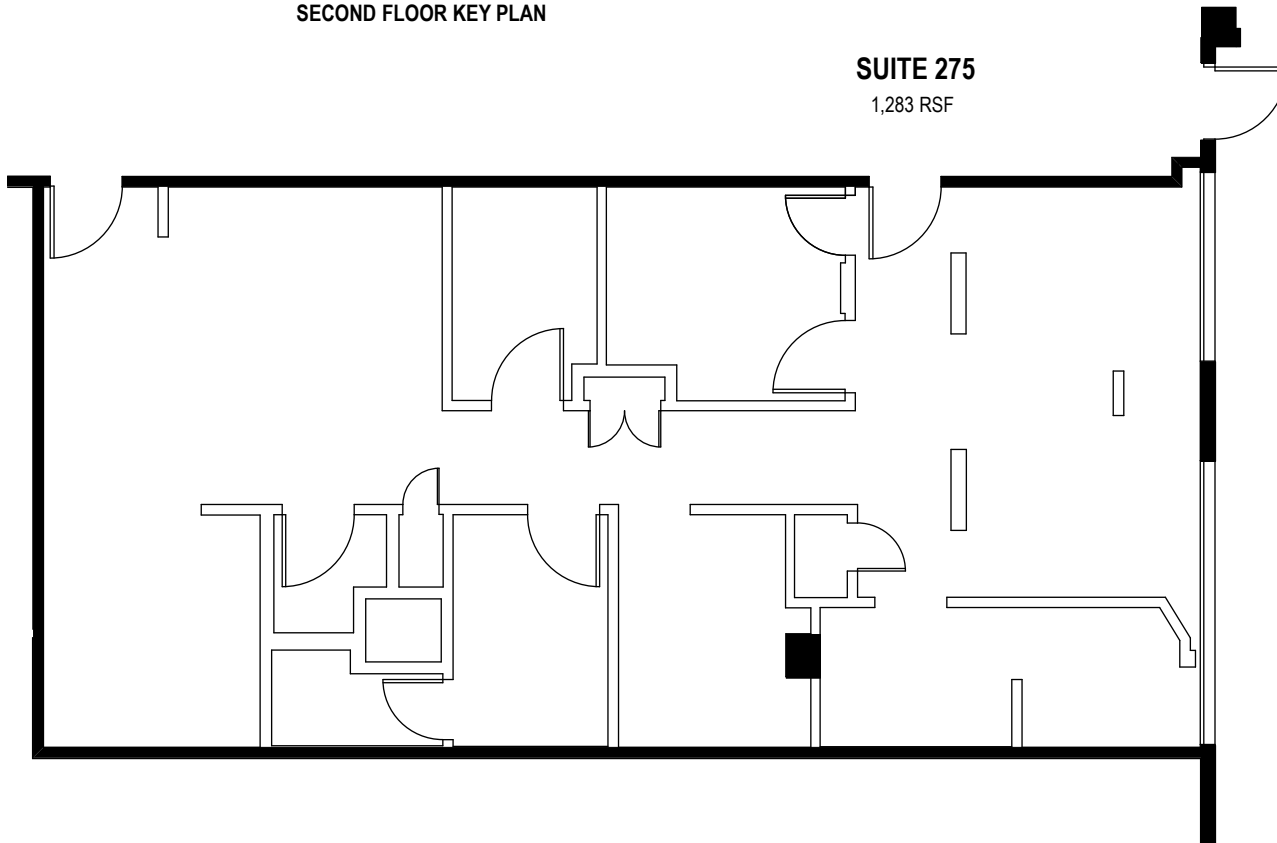


SUITE FLOOR LOCATION



SALVIO STREET
SECOND FLOOR KEY PLAN

SUITE 275
1,283 RSF



Colliers International
1850 Mount Diablo Boulevard, Suite 200
Walnut Creek, CA 94596 | United States
www.colliers.com

LEASING AGENT

Matt Hurd
(925) 279-5567

matt.hurd@colliers.com

Scott Ellis
(925) 279-5575

scott.ellis@colliers.com

Salvio Pacheco Square

2151 Salvio Street
Concord, CA 94520

Second Floor

Owned & Managed by:

LeFever Mattson

Approximate Area Calculations
Subject To Verification:

1,283 rsf

As-built Plan To Be Verified

This information displayed while not guaranteed has been secured by sources we believe to be reliable. This information is subject to errors & omissions. Any tenant should conduct their own investigation.

Plan Revision - 3-21-18